

Accelerate Your Impact Through PROJECT MANAGEMENT



You received the funding for a new project but don't know where to start or have the internal capacity to implement. We can come alongside your team for the short or long-term to augment your capacity.



COLLABORATE

We come alongside your team for the short or long-term to augment your capacity. We become an extension of your internal team, reducing the need for additional staff.



ASSESS

Using best practices and our process management model, we consistently analyze the effectiveness of the project, and look for gaps or areas for improvement throughout our partnership.



CREATE

Based on our ongoing analysis, we create improvements or additions to the current project in order to ensure we are accelerating your mission.

“ I have said it on multiple occasions, but I literally could not do this work without the project management support we receive from Transform Consulting Group. Project management is the life blood of what we do. We have a group of 150+ volunteers from around the state and need someone to play that role of project manager to keep our work moving forward. That's the role TCG has done so well. ”

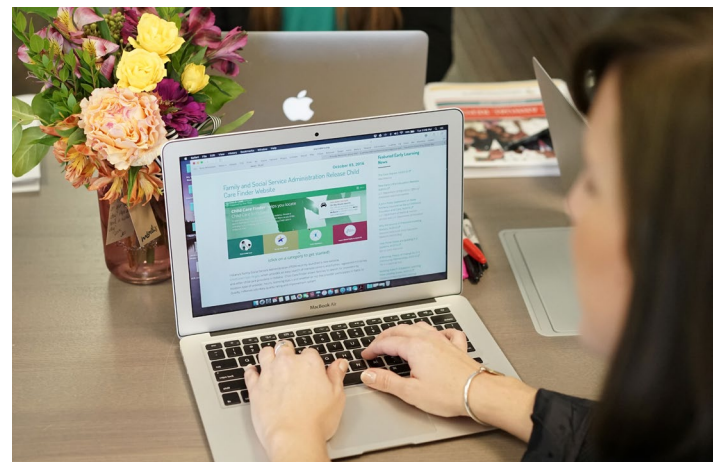
Kevin Bain, Former Chairman, Indiana Early Learning Advisory Committee

OUR SERVICES:

- ✓ Develop and implement a project management plan including timelines, roles and responsibilities and reporting structure
- ✓ Provide backbone support to manage the work
- ✓ Support transition periods of leadership



TRANSFORM
— CONSULTING GROUP —



www.transformconsultinggroup.com

317.324.4070 | 144 South Wabash Street | Wabash, IN 46992
Offices in Indianapolis, Evansville, and Northern Indiana



Transform Consulting Group



@AboutTransform



@GoTransform